

Who's who?

(As of 1 April 2022)

Chief Executive



David Carter

Chair



Simon Linnett

Senior Independent Director



Gordon Johns

Non-executive Directors



Simon Barton
(Vice Chair)



Mark Prior



Annet Gamell



Ian Mackie

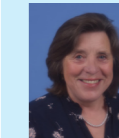


Steve Hone



Tansi Harper

Council of Governors



Lead Governor -
Helen Lucas

Executive Directors



Deputy Chief Executive/
Chief Operating Officer -
Cathy Jones



Director of Finance -
Matt Gibbons



Medical Director -
Mr Paul Tisi



Director of Human Resources -
Angela Doak

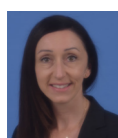


Chief Nurse -
Liz Lees
MBE



Director of Quality and Safety Governance -
Catherine Thorne

Non-voting Directors



Director of Redevelopment and Strategic Planning -
Melanie Banks



Chief Digital Information Officer -
Gill Lungley



Director of Estates and Facilities -
Dean Goodrum



Director of Culture and Organisational Development -
Fiona MacDonald

Cross site responsibility

Bedford site responsibility

L&D site responsibility

Medical Director's Team

Deputy Medical Director	Dr Danielle Freedman
Deputy Medical Director	Dr James Ramsay
Deputy Medical Director	Mr David Kirby
Associate Medical Director (Clinical Integration)	Dr Rory Harvey
Associate Medical Director (Clinical Integration)	Dr Beryl Adler
Associate Medical Director (Mortality Governance)	Dr Sarah Snape
Lead Medical Examiner	Dr Robin White
General Manager to MD's Office	Jenny Cadman
Associate Medical Director for Revalidation & Appraisal	Dr Penny McNamara
Associate Medical Director for Revalidation & Appraisal	Dr Frances Spears

Corporate Nursing

Deputy Chief Nurse	Belinda Wood
Lead Nurse for Strategic Nursing Projects and Improvements	Carmel Synan-Jones
Deputy Director of Nursing	Aoife McKnight
Associate Director of Nursing	Paul Raynor
Associate Director of Nursing (Patient Experience)	Vacant
Head Nurse - Infection Control	Jack O'Regan
Deputy Director of Nursing	Ann Williams
Assistant Director of Nursing	Helen Judkins
Head Nurse - Infection Control	Sue Fox

Director of Infection Prevention & Control

DIPC	Dr Rohinton Mulla
------	--------------------------

Corporate Governance

Associate Director of Corp Gov.	Victoria Parsons
Board Secretary	Donna Burnett
FT Membership	Anne Thevarajan
Corporate Governance Manager	Jenny Kelly

Finance and Procurement

Deputy Director of Finance	Ricky Shah
Chief Contracting Officer	Helen Mulhern-Wilson
Head of Financial Control	Jenny Pigott
Head of Procurement	Jacqui Nicholls
Senior Finance Lead (Corporate, Operational Services & Medical Education)	Tina Campbell
Senior Finance Lead (Projects)	Alison Upton

Human Resources

Associate Director of HR - Services	Jim Machon
Associate Director of HR - Operations	Anne Buck
Head of Recruitment and Resourcing	Julie Taylor
Head of Health & Wellbeing	Jennie Jones
Head of Training & Learning	Samantha Brett
HR Business Partner - Corporate	Paula Ryall
Head of Medical Workforce	Sarah Warren
Head of Workforce, Informatics and Planning	Aneel Attrik
Recruitment and Resourcing Manager	Iwona Magda
Occupational Health Manager	Cheryl Palmer
Head of Workforce and Projects	Aman Khan
Recruitment and Resourcing Manager	Malik Farooq
Occupational Health Manager	Jackie Davies

Charity

Head of Charity	Sarah Amexheta
Deputy Fundraising Manager	Charmaine Norrish
Grants and Trusts Manager	Rachel Coakley
Voluntary Services Manager	Deborah Allman
Community/Voluntary Services Manager	Karen Bush

Communications

Head of Communications	Louanna Lubega
Deputy Head of Communications	Adrian Watson

Patient Experience, Complaints & PALS

Patient Experience Manager	Julie Hargreaves
Complaints Manager	Sheila Iliasu

Culture and OD

Associate Medical Director	Dr Harriet Nicholls
Associate Medical Director	Dr John McNamara
Assistant Director of OD	Paul King
OD Practitioner	Nicki Francis
OD Practitioner	Hazel Watson

Medical Education

Director of Medical Education	Nisha Nathwani
Deputy Director of Medical Education	Tejal Shah
Medical Education Manager	Rosa Lombardi
Library Services & Knowledge Manager	Carol Smith
Medical Education Manager	Sharon Fletcher
Head of Library	William Henderson

Quality & Safety Governance

Deputy Director of Quality & Safety Gov/ Patient Safety Specialist	Pippa Street
Head of Quality Governance	Denis Sellu
Head of Clinical Safety & Improvement	Melissa Rigg
Head of Legal Services	Gwen Goring (interim)
CSL Quality Governance Support Lead/ Head of Clinical Audit	Jacqui Stretton
Clinical Risk & Patient Safety Investigations Manager	Judy Davey

Estates & Facilities

Assistant HR Business Partner	Kerry Mulholland
Director of Support Services	Steve Morgan
Senior Estates Manager	Vacant
Health & Safety Manager	Terry Edwards
Head of Operational Estates	Roy Maynard
Assistant Director of Estates & Facilities	Debbie Green
Health & Safety Manager	Barry Harper
Sterile Services Manager	Wayne Keane

Integration & Transformation

Snr. Integration & Transformation Lead	Emily King
--	-------------------

Contracts & Business Development

Head of Contracts & Business Development	Tom Joyce
--	------------------

Information

Associate Director of Performance & Information	Tim Hughes
Head of Performance Reporting & Business Intelligence	Nadine Wright
Head of Clinical Information & Data Quality	Ann Buck
Head of Clinical Coding	Grace Amadi
Head of Technical Analytics	Nico Graziano

Digital

Chief Digital Transformation Officer	Josh Chandler
Head of Applications and Development	Val Fitzgerald
Head of Infrastructure and Unified Comms	Dean Khwaja
Head of Service and Endpoint	James Nash
Chief Information Security Officer	Tim Allingham
Snr Programme Manager (EPR)	Martina Vogel-Matthews
Programme Manager (Tech)	James Pearce
Programme Manager (Digital Solutions)	Balazs Foldvari
Programme Manager (e-Portal)	Indy Bhogal
Chief Nurse Information Officer	Stephen Mason
Chief Clinical Information Officer	Joya Bhattacharyya

Redevelopment

Construction Director	Phil Brand
Construction Project Director	Kyle McClelland
Senior Programme Manager	Charles Frampton
Senior Programme Manager	Caroline Roberts

Information Governance

Head of IG/DPO	Heidi Walker
Caldicott Guardian	Malcolm Griffiths

Research & Development

Director of R&D	Dr Muhammad Nisar
Deputy Director of R&D	Dr Jeremy Sizer

Chaplaincy

Lead Chaplain	Varkey Eappen
---------------	----------------------

