



Redevelopment update

Community Hub in the centre of Luton



Adult GP Phlebotomy services, a full and comprehensive Dermatology service and Sexual Health services will move to Arndale House in the centre of Luton in May 2018. Around 80 Hospital staff will move to Arndale House, including Consultants, Nurses, Health Support Workers, admin and clerical teams and other support staff.

The Trust has been keen to support one of the key themes of the Bedford Luton and Milton Keynes STP which is to provide more services in a community setting. The provision of these services in a facility which provides good access to patients also releases space on the main hospital site. This is hugely important as space at the Hospital is very limited and patients requiring specialist hospital care is increasing at a fast pace. The space freed up on the hospital site will allow the expansion of obstetric and gynaecology clinics; the creation of a new pre assessment hub; ophthalmology expansion to provide an intra-vitreous treatment (IVT) suite; and additional outpatient accommodation to support specialist medical clinics (gastroenterology, rheumatology, respiratory and cardiology). Growth in these areas will support improved access for patients and importantly support patients to receive timely care.

It is recognised that services being offered from Arndale House will

be more convenient for patients that live, work or visit the town, but for GP patients more local to the hospital, this will require an increased travel time. Arndale House is a discreet facility accessed from the shopping mall in Luton, it will provide a new and improved patient environment and allow more timely access to clinical services here and on the Hospital site due to the service expansion that this move will support.

Approximately 33% of the total phlebotomy service will move to Arndale House, this is the adult GP phlebotomy and anticoagulation service only. Approximately 12,000 bloods per month will remain on the hospital site, these include; Inpatient bloods, Outpatient bloods, Pre admission bloods, Haematology bloods, new anticoagulation activity, all paediatric outpatient bloods, blood tests for patients requiring transport and blood tests for patients with learning difficulties.



Big Improvements to the Oral and Maxillofacial Surgery and Orthodontic Service

The new and improved OMFS and Orthodontic service opened its doors in August 2017 to provide a larger, more modern and bright department. There has been some great feedback from staff and patients who are extremely

happy with the much needed expansion of the OMFS department, which serves as a centre for OMFS services across Beds, Herts and Milton Keynes. General Manager, Charles Frampton says "Staff are extremely happy with the additional capacity this has created and the opportunity for future expansion of the services that we can offer to our patients, here at the L&D."

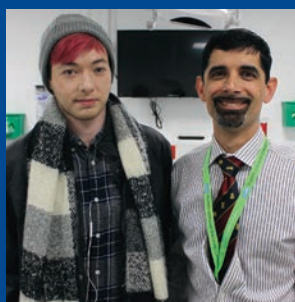


Fundraising Appeal to support the Child Oncology Room project

The Hospital Charity is half way through a fundraising campaign to support the creation of two new paediatric oncology rooms, designed by staff and patients, to create a more positive and calming experience whilst resident on the ward.

To donate to the Appeal please call **01582 718 289** or text **PONC99 £5 to 70070** or send a cheque made payable to Luton and Dunstable Hospital Charity and send to Fundraising Team, Luton and Dunstable Hospital, Luton, LU4 0DZ

New treatment for life changing and disabling jaw injuries



Nathan Spear with Consultant Oral & Maxillofacial surgeon Mr Alan Parbhoo

A surgeon at the L&D has performed an operation new to the L&D on a young man who broke his lower jaw, resulting in a hugely improved outcome for the patient's future quality of life.

Consultant Oral & Maxillofacial surgeon Mr Alan Parbhoo fixed the jaw of Nathan Spear from Dunstable, which was broken in multiple places and dislocated, using titanium screws and plates, rather than the traditional method of wiring the teeth of both jaws

together, meaning patients cannot open their mouths to chew or brush their teeth.

This new technique has meant that Nathan made an excellent

recovery and was able to open his mouth and bite normally immediately after surgery.

Mr Parbhoo said: "I am extremely happy with the outcome for this young patient. This was a very serious disabling and life changing injury. The previous way of treating it means that the teeth often never meet normally again causing difficulty eating for life, and a high risk of developing early arthritis.

"Nathan should now have a normal bite, and a lower risk of arthritis."

The jaw joint service is being developed by Mr Parbhoo and Mr Majumdar, providing new treatments such as arthroscopy to treat disease of the joint.

The Oral & Maxillofacial Department has recently undergone a £1m expansion in order to be able to deliver 21st century surgery, providing a much improved service for patients.