



SITE REDEVELOPMENT NEWS

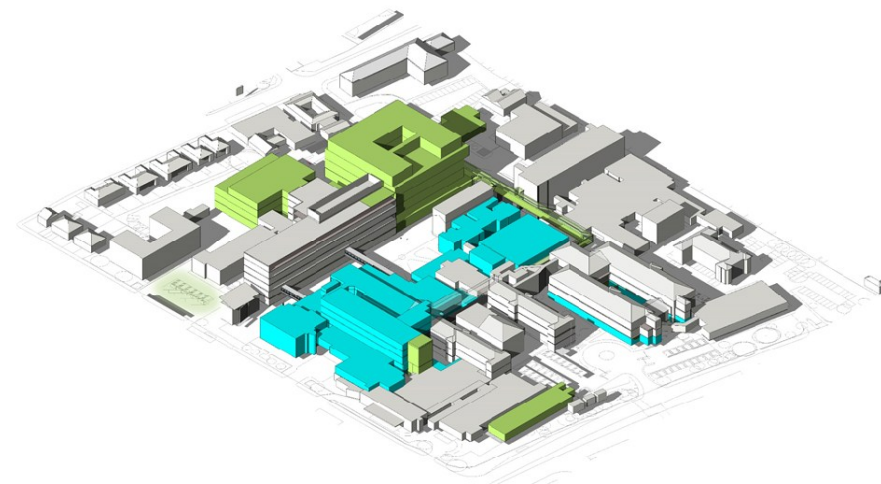
The quarterly newsletter for the redevelopment of the L&D



Dear Colleagues,

We have now submitted the full business case for the proposed merger with Bedford Hospital and further business cases to support capital developments on both Hospital sites. The L&D have requested £106m from the

Department of Health to support the Redevelopment programme. The first phase of this development which is proposed to take place over the next 4 years, is the build of an Acute Services Block adjacent to the Surgical Block, and a fast link corridor linking the new block with our Emergency Department. The first thing however that we must do before any build can take place, is clear the site and this means taking down Trust HQ. This requires us to build a new office facility on the Hospital site to house our staff. It has been a long time coming and we remain hopeful that funding is forthcoming to support us to achieve our strategic aspirations. We hope that when we next write to you in April 2018, we will have positive news to share with you.



Kind Regards
David Hartshorne
Director, Redevelopment Programme

Imaging Expansion and Refurbishment works

This year, major works will take place in imaging to introduce a third MRI scanning suite. This will negate the requirement for the temporary MRI "van" on the Hospital site and ensure sufficient capacity to support demand and timely service provision. Works to deliver the new MRI suite will commence in February 2018. In parallel to this, the department will undergo refurbishment works to support an improved waiting and changing area for patients, to address issues of patient dignity and privacy. A planning application has been submitted for these works which will see the waiting areas for both inpatients and outpatients, segregated and enlarged. Works to deliver the improved patient space will commence towards the end of Spring.



Thank you to the Hospital Charity

The Hospital Charity are over half way through a fundraising campaign to support the creation of two new paediatric oncology rooms. Fundraisers have already raised in excess of £100k for this amazing project. If you would like to get involved with any fundraising initiatives, please contact the Fundraising Team on 01582 718289 or email fundraising@ldh.nhs.uk.

Ultrasound works now complete



The refurbishment of one of the ultrasound rooms and the creation of a fourth ultrasound room is now complete.

If you have a question about the Site Redevelopment, please contact the Site Redevelopment team:

Tel: 01582 49 8815 or Email: reddevelopment@ldh.nhs.uk



Mortuary

Refurbishment works in the mortuary completed in November 2017. The project saw a redesign of the bereavement suite and waiting area (pictured below) and an increase in fridge capacity to provide a total of 105 fridges.

MISSION COMPLETE



Designs worked through for new Pre Assessment Hub at the Hospital

A new pre assessment hub will be created at the Hospital. Design work is currently underway to redesign the space on the ground floor of the surgical block, currently housing the phlebotomy service. The team expect to move into their new facility at the end of the Summer.

APPROVED

Outpatient services move to Arndale House and expansion on the Hospital site

Dermatology, Sexual Health and GP Phlebotomy will move to their new premises at Arndale House in the centre of Luton, in May 2018.

These moves free up clinic space on the Hospital site. The freed up Dermatology space will be used to support expansion of specialist medical clinics—respiratory, rheumatology and gastroenterology. These services directly support a new clinical strategy for the Trust—Needs Based Care—the medicine strategy to manage emergency and elective growth.

The cohorting of specialist medical clinics frees up space on the ground floor of outpatients which allows some much needed expansion space for Ophthalmology clinics.

Gynaecology will move into the vacated Sexual Health clinic space, this supports much needed expansion space for both Gynaecology and Obstetric clinics, and aims to address patient privacy and dignity issues.

Whilst a significant proportion of the phlebotomy service will move to Arndale House (approximately 4,000 patients per month), a large number of patients will continue to be bled on the hospital site and the one stop outpatient phlebotomy service will continue to be provided within outpatients.

Endoscopy and Decontamination

The Endoscopy department has seen a significant increase in demand over recent years and predicts similar patterns going forward. To support growth, two further endoscopy rooms will be built, the first of which is now complete. To support activity and to address current issues with the decontamination unit, a new decontamination facility is required. This facility will be built during 2018, adjacent to sterile services in the estates building.



In the next newsletter read about...

Landscaping around the Hospital

The new surgical discharge lounge and procedure rooms being created on the surgical wards.