



# Fundraising | News



## Thank you for making a difference to our patients...

### Maternity

**Thank you for all the fantastic support we receive in the maternity department.**

This year's donations have enabled us to put a birthing pool into the delivery suite, new wireless telemetry equipment which allows mums to move around while monitoring babies' heart rate and sleeper chairs for partners.

This year we have seen over 5000 babies come into the world at the L&D. As a consultant midwife, I feel pride and wonder at every birth that I assist with. I feel privileged to be part of such an incredible time in a women's life and would like to thank all my mums for being so amazing.

Thank you all for donating and supporting our Maternity Department.

**Stella Roberts**  
Consultant Midwife

### The Hospital Chapel

**Thank you for supporting our wonderful Chapel development.**

The hospital employs a diverse workforce with staff from various religions, beliefs and cultural communities. This is reflected in the way that the Chapel is now used, with people from Christian and other faith communities often praying at the same time. The refurbishment has created a specific Christian area, a Chapel within the Chapel, and the main worship space can be used by people of all faiths or none.

Access to the Chapel has been much improved and is now much easier for wheelchairs users. The space is more welcoming for patients, their visitors and staff with a new altar, seating, flooring and lighting.

"We are extremely grateful for all the support we have received. Contributions have enabled us to create a bright, welcoming space where people of all faiths, or none, can come for quiet reflection and prayer for years to come."

**Martyn Trembath**  
Lead Chaplain

### Blue Light Cystoscopy

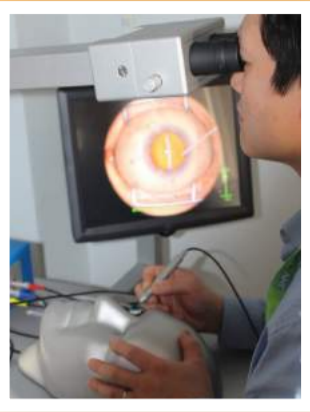
**Thanks to your generous support, we are delighted to introduce blue light cystoscopy at the L&D.**

Bladder cancer is among the top ten most commonly diagnosed cancers in the UK with over 10,000 new cases diagnosed every year in the UK. Bladder cancer frequently recurs and can progress aggressively if not treated quickly.

"Blue light cystoscopy allows surgeons treating patients with bladder cancer to see the cancerous cells clearly because they glow bright pink under blue light. This enables the surgeon to see and remove more tumours and they can be certain that they have removed all the cancer. We very much look forward to treating our bladder cancer patients with blue light cystoscopy and helping save more lives."

**Barnaby Barrass**  
Urology Consultant

In brief...



Ophthalmology Eyesi device

Our trainees are extremely lucky to be able to use such a realistic simulator; the tools are life like, including the weight and balance.

I feel a lot happier supervising a registrar in theatre after assessing their skills on this simulator first. 'It gives me the chance to help them improve their skills using the device.

Personally it allows me to simulate difficult cases which we may not see very often and I can practice a procedure in a safe environment, giving me more confidence when faced with the same difficulties on a patient in the theatre. There are not many of these devices, we are very grateful to have one.

Jason Chan, Ophthalmology Consultant



NICU

We are truly grateful to all the people who fundraise and donate items to our Neonatal Intensive Care Unit (NICU).

This year, nearly 1000 premature and sick babies have been treated here. I have been a consultant in NICU for five years and each baby is special. I am always touched and moved by our families' experiences of the unit and I am pleased to support their first journey. I am truly grateful that I have been able to make a difference to these precious little lives, thank you for letting me help.

Dr A Carmichael, Neonatal Consultant

We would also like to thank all the kind people who knit for our babies. It can be difficult to find clothing which is the right size to fit these tiny babies and so many of them are born before the parents have had the chance to buy baby clothes. Having premie hats, cardigans and small blankets available is an invaluable asset. Babies lose a lot of heat from their head and their temperature regulation system is immature, so it is very important that we have these items to hand as soon as they are born. Thank you from my team and the NICU families.

Helen Collins, Neonatal Sister

Why donate

Frankie says Relax!

Sam Findlay began fundraising for NICU in 2011 after her son Frankie was born at just 34 weeks. Sam started a team called Frankie says Relax, which was named after his NICU 'aunties and uncles' who commented on how calm Frankie was during his time in NICU.

"The care that Frankie received whilst in NICU was literally lifesaving. Without it, he would not be here today and our family would not be complete. We could never thank the team enough for what they did for us. We decided that we needed to give something back and we made it our mission to raise the cost of Frankie's treatment which was £21,600.

The team have completed various events over the last 6 years to raise money, including taking part in the Great North Run. We always said that once we got to £20,000 we would throw a huge party to say thank you to everyone for their support and to hopefully raise our final £1,600. In February 2017 we reached £20,000 which was amazing, so on 7th October, we held 'The Frankie says Relax £20K Party'. It was a celebration of all things NICU and was attended by NICU staff, NICU families, supporters and of course our wonderful team who have all been a part of our journey."

Frankie and his brother Freddie took part in the Junior Great North Run in September to continue fundraising for NICU. For Sam, it was lovely to see that her boys have got to an age where they understand what the team have achieved and that they wanted to do their bit. She was the proudest mum in the world watching them cross the finish line knowing the journey that they have been on as a family.



The L&D Mudders; more distance, more weights and more mud!!

"We wanted to raise funds to support dementia patients at the L&D. We see the hard struggle they go through on a daily basis. Dementia is a secondary condition for most patients, as they are normally admitted following a fall, a chest infection or another medical need. Unfortunately

hospital can be very daunting for patients, let alone someone fighting dementia. We set ourselves four challenges, each harder than the last: First we did a Spartan race sprint, Tough Mudder, Spartan Race (Super) and Spartan race (the Beast). Ann also decided to throw in a 100km run for good measure!

We wanted to raise funds to buy specialist distraction therapy equipment, music players and games as well as other improvements for the care of patients with dementia and to show solidarity in fighting dementia."

Peta le Roux, Head of Workforce Planning and Ann Williams, Clinical Leadership and Development Nurse

Roy and Frances raise £1000 for ITU

We were delighted to hear about Roy and Frances who celebrated their Silver Wedding Anniversary earlier this year. Their celebrations were even more special as Frances had been seriously ill and had spent some time in the Intensive Therapy Unit.

Frances and Roy were able to enjoy their anniversary celebrations. They kindly asked for donations for ITU rather than presents and presented us with a cheque for £1,000.



The Grant Foundation

The Grant Foundation are delighted to support some of the new initiatives within Luton and Dunstable NICU this year.

We have had personal experience of attending the unit when my son was born extremely prematurely at L&D and was treated in the NICU there for 2 months. Luton and Dunstable NICU stands out to us above others for the dedication and skill of its' staff and the supportive environment that has been cultivated.

It is a privilege to be able to support such a unit and to encourage the staff and parents who, together, strive to give each and every one of the babies that pass through their doors the fullness of life that they deserve.

#LDHFundraising in the community

My name is Bianca Lee John and I am the Community Fundraiser at the Luton and Dunstable Hospital.

My goal is to connect and engage with members of the Community and to build relationships in order to raise awareness and funds locally for the wards and departments that we support at the hospital.



It has been a very busy and enjoyable few months for me and I have been out and about across Luton and Dunstable all summer with our volunteers.

I have met lots of fantastic people in our local community at fayres, carnivals, fetes and festivals. I have also had the pleasure of talking to community groups and schools in the area who have been generously fundraising for the hospital.

In April, I launched our new fundraising Twitter and Instagram pages, where you may have seen some of our posts and events. To find out about our activities and for all fundraising updates on social media follow us @ldhfundraising you can also find us on Facebook, L&D Hospital Fundraising

If you would like for me to come and visit your group or to attend any fundraising events in the community please contact me: Bianca.John@ldh.nhs.uk



About the team

We love supporting our donors and work tirelessly together behind the scenes to ensure that all donations received, are allocated appropriately to support patients and staff at the hospital.

Thank you from all of us for your kindness and generosity.



# Fundraising superstars



Hamilton FC under 9's gave Christmas presents to the Children's Ward



Sabine and Tracey reached their target of raising £10,000 for NICU



Harlington Sixth Form raised £2000, helped at bucket collections and wrapped Christmas presents.



Dunstable and District Orbit Club collected £700 for the Diabetes Centre



Members of the Ahmaddiya Muslim Youth Organisation kindly donated toys and art equipment to staff in our Children's Wards



Our Children's Ward was charity of the year at Branningham and Dunstable Sainsbury's.



Isaac took part in the St Albans Fun Run and raised £132 for the Children's Ward.



Cheynes Infant School held a toy sale which raised £250 for NICU



Gerry Taylor and his customers raised £1500 to support the Child Oncology Room project.



Staff from local Dominos Pizza Stores presented the Children's Ward with a cheque for £10,000 for the Child Oncology Room Project



Members of the Duo Fraternitatas lodge visited the Breast Screening Unit and presented a cheque for £430



Crane Fund donated \$7275 for the Child Oncology Room Project



Shannon was the millionth finisher in the London Marathon and ran again in 2017 for NICU



Thanks to Oakley Studios for creating our NICU calendar and raising £1050



A football match was held in memory of Stephen McPhee raising £1100 for NICU



Staff from 3 local branches of Household Estate Agents delivered Christmas presents for our children and elderly patients



Dunstable Quilters delivered a selection of lovely quilts which had been made under Project Linus for children on the ward



Tom ran the London Marathon dressed as St George, raising money for the Children's Ward

## Thank you to our local supermarkets for your support

Sainsbury's Bramingham	Waitrose Harpenden
Sainsbury's Dunstable	Waitrose Leighton Buzzard
Sainsbury's Bury Park	Morrisons Houghton Regis
Tesco Dunstable	ASDA Dunstable
Tesco Hemel Hempstead	ASDA Luton
NISA, Marsh farm	Waitrose Ampthill
NISA, Farley Hill	Morrisons Houghton Regis
NISA, Lewsey Farm	

## Many thanks to the grant giving trusts that have supported us

Amateurs Trust  
The Windmiller Charitable Trust  
The Grant Foundation  
Bedfordshire and Luton Community Foundation  
Steel Charitable Trust  
The Wixamtree Trust  
Crane Fund for Widows

## More superstars...

Hightown Honeys WI have supported NICU this year  
Strong Tower 7th Day Assembly's Gospel Concert raised £1185 for Dementia Care  
Denise's Party in Pink zumbathon raised £312 for the Breast Cancer Unit  
Paul raised £390 by running in the Love Luton Half Marathon for Head and Neck Cancer Unit

Thanks to the HBB Bikers who delivered Christmas presents and Easter Eggs for the children

Our children's choir concert "Let your Spirit Fly" raised an amazing £3000 for the Child Oncology Room Project

Graham organised a Golf Day and Barn Dance which raised £3000 for NICU

Claddagh Gaels have supported us again this year and have raised £2500 for the Children's Ward with their sponsored walk

Thanks to Laura for organising a UB40 Tribute Night and raising £650 for NICU

Our first Race Night raised £1500 for the hospital charity

NCS Luton held a Charity Fun Day which raised £268 for the Hellipad Appeal

Steve took part in Tough Mudder to raise money for the Chemotherapy Unit in memory of his friend Kevin

Sue organised a Strawberry and Wine Evening which raised £1200 for the Child Oncology Rooms

Geoff cycled from Dunstable to Hunstanton raising £150 for the child oncology rooms project

Ramridge Primary School raised £154 for Child Oncology rooms project.

Childrens Ward staff raised £4300 from a tandem skydive.

Dr Hedges swam the Isles of Scilly, raising over £2000 for Child Oncology rooms project.

# Current fundraising appeals



6

## Helipad appeal

### Saving precious minutes will help save precious lives.

We need to build an on-site helipad at the L&D which will be linked to the Emergency Department to ensure that everyone who needs specialist care can access it as easily and quickly as possible.

Each year, over 90,000 patients are admitted to the Emergency Department at the L&D. Approximately 25% of these have life threatening injuries and require immediate and specialist medical care. There are even more people who need specialist care but because we don't have a helipad, patients who need to be air lifted to hospital cannot come here.

When someone suffers a major trauma the quicker they receive specialist emergency care, the more likely it is that the treatment will prevent death or serious disability.

This is often referred to as the Golden Hour and emergency services strive to get patients to the most appropriate place for lifesaving care within an hour of sustaining their injury.

Helicopters offer a much more reliable way of transporting critically ill patients as they significantly reduce travel time compared to a land ambulance.

### The new helipad

The location for the new helipad has been chosen because it is the best place to transfer patients directly from the air ambulance to the Emergency Department and other critical care departments such as the Cardiac centre and the Stroke ward.

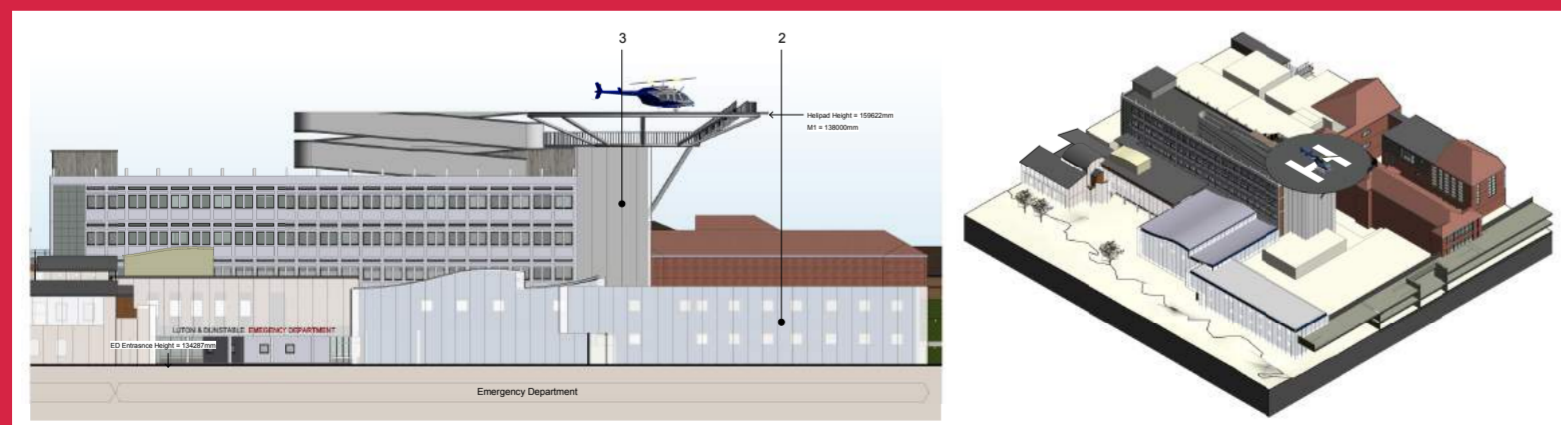
If you or someone you loved were involved in a serious accident, you would give anything for the best medical care to be available as quickly as possible.

### Cost of building a rooftop helipad at the L&D

The cost of the new helipad is £5.4million which includes all the design and enabling work, the lift access to the Emergency Department, adequate lighting so it can be used 24 hours a day, an automated fire system and the helipad itself. We have already secured a generous donation of £2million from the County Air Ambulance HELP Appeal and have received pledges of nearly £1 million.

### We now need your help to raise the final £2.5 million

If you would like to support this appeal or would like more information, please visit the hospitals website [www.ldh.nhs.uk/helipad](http://www.ldh.nhs.uk/helipad)



## Help children with cancer

**We would like your help to transform two side rooms, which are used to treat child cancer patients.**

The new layout will create more space and the rooms will be designed to adapt to children of different ages. There will also be adjustable lighting so that children suffering with light sensitivity due to their condition are not stuck in a room with halogen lighting. Lots of the medical equipment will be concealed in integrated compartments while remaining accessible for staff.

There will be a small integrated kitchenette and sofa bed so that parents can stay with children, as well as a movable desk so parents can work when necessary.

A lot of cancer treatments take place over a number of years, so parents need a work space.

With your support we want to make the rooms comfortable, colourful, tranquil and private. A space the children can adopt as a 'home from home', with storage for their own toys and comfort items, as well as a projector that can display photos or their favourite cartoon characters.

Our children's services were rated 'outstanding' in our recent CQC inspection, with dedicated, caring paediatric specialists. The staff on the unit are incredible and we want to create an environment that matches this excellence.



£150,000

£140,000  
£120,000  
£100,000  
£80,000  
£60,000  
£40,000



The room will offer comfort and inspire hope at a very difficult time for the children and their families.

The total cost of transforming the two ensuite rooms is £150,000.



LUTON & DUNSTABLE HOSPITAL CHARITABLE FUND

7

## Create your legacy

Help shape the Luton and Dunstable University Hospital for generations to come by leaving us a legacy gift in your Will



Please ask us for an information leaflet

# Christmas at the L&D

We are always overwhelmed by the support we get from the community and the generous donations we receive for patients.

## Light up a Life this Christmas

The L&D's Christmas tree will be twinkling proudly at the main entrance for everyone to see. You can buy a light as a gift or in memory of someone special. If you buy one as a gift, they will receive a card with your message. If you buy one in memory of a loved one, you will receive a letter of dedication. Lights are £5 each or 3 lights for £10.

To buy your light, download a form from [www.nhs.uk/fundraising](http://www.nhs.uk/fundraising) or call 01582 718 289. Lights go on sale from 1st November.

The tree lighting ceremony is on Thursday 7th December at the front of the hospital. Hadrian Academy choir will be singing and children from the Children's Ward will be switching on the lights. Refreshments will be served afterwards in the warm! We hope to see you there.

## Give a Gift this Christmas

Spread some festive cheer this Christmas and give a gift to one of our patients. Many of our patients will be spending Christmas Day in hospital this year and sadly some of them won't have many visitors, if any. You can help spread some festive cheer by buying a present from our Amazon wish list.

Once purchased, gifts will be delivered straight

to the hospital. We have wish lists for all of our patients. Visit [www.amazon.co.uk](http://www.amazon.co.uk) and search for 'Luton and Dunstable Hospital' in the wish list section to buy a gift.

## Sparkle Day

Join us and sparkle on Friday 15th December! This is our second year of celebrating sparkle day where staff join in and wear something that sparkles to bring smiles on their wards and departments.

Why not hold a sparkle day at your workplace or community group and raise funds to support the hospital? You can wear a festive hat, tie, t-shirt, jumper or sparkly tights. Suggested donation £1.

## Christmas Posters

Instead of sending Christmas cards to your colleagues this year why not take part in our Christmas Poster Campaign?! It's really easy!

Put one of our posters up in your staff room/ kitchen area for everyone to see and each member of staff can sign the poster with festive wishes instead of sending each other a card!

You then make a small donation in lieu of the money you would spend on Christmas cards.



To get involved in any of our Christmas activities please call 01582 718 289 or email [fundraising@ldh.nhs.uk](mailto:fundraising@ldh.nhs.uk)

8



## Help shape the Luton and Dunstable University Hospital



## How can you donate?

You can set up a regular monthly donation via our website: [www.ldh.nhs.uk/donate](http://www.ldh.nhs.uk/donate)

Or Just Giving page (direct debit): [www.justgiving.com/ldhcf](http://www.justgiving.com/ldhcf)



YOUR DONATION COULD HELP...

For more information about fundraising, or to discuss which ward you want your regular donation to benefit, please call the **Fundraising Manager** on **01582 718 043**

them



and them



and thousands more

*By making a regular donation to the L&D Hospital Charitable Fund, you are supporting our patients, their families and our staff*